



data:\users\moverholt\JAMAR\RACPro\Sample Data\Sample File.rac

Sample File: "Other": _____ Notes: _____

8/24/2016 Start Location: 1500 Industry Rd. End Location: 1500 Industry Rd.

00:00:00

Mapping: Map It

Show Tracking Events

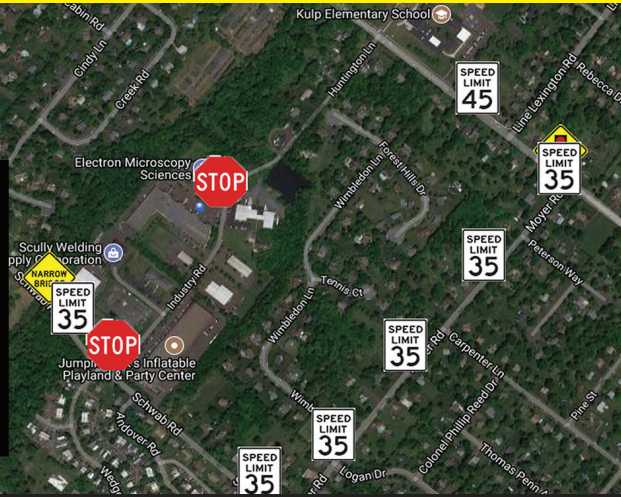
Event Code	Event Description	Interval Distance (Feet)	Total Distance (Feet)	DMI Clock	Elapsed Time	Speed (MPH)	Latitude	Longitude	Fix	Sats
-1		0	0	00:00:36	00:00:00	0	40.263632	-75.282965	1	9
2	1	173	173	00:01:24	00:00:48	3	40.263717	-75.282492	2	9
3	1	1366	1539	00:02:09	00:01:33	4	40.260680	-75.285013	2	8
4	35	401	1940	00:02:23	00:01:47	27	40.261373	-75.285963	2	9
5	62	254	2194	00:02:30	00:01:54	25	40.261940	-75.286528	2	8
6	35	1385	3579	00:02:58	00:02:22	32	40.264603	-75.290038	2	9
7	72	714	4293	00:03:15	00:02:39	23	40.265975	-75.291882	2	8
8	1	234	4527	00:03:23	00:02:47	9	40.266437	-75.292485	2	9
	Railroad Crossing	223	4750	00:03:32	00:02:56	25	40.266898	-75.292142	2	9
	40 MPH Speed Limit Sign	622	5372	00:03:46	00:03:10	33	40.268200	-75.290717	2	9
	Signal Ahead	1655	7027	00:04:23	00:03:47	5	40.271795	-75.287033	2	9
	Signal Ahead	160	7187	00:04:52	00:04:16	22	40.271672	-75.286623	2	9
	45 MPH Speed Limit Sign	157	7344	00:04:56	00:04:20	29	40.271422	-75.286182	2	9
	45 MPH Speed Limit Sign	1583	8927	00:05:24	00:04:48	40	40.268710	-75.281773	2	8
	School Zone	639	9566	00:05:34	00:04:58	41	40.267618	-75.279985	2	9
	45 MPH Speed Limit Sign	1263	10829	00:05:56	00:05:20	33	40.265457	-75.276442	2	8
	Signal Ahead	690	11519	00:06:18	00:05:42	18	40.264290	-75.274482	2	9
	35 MPH Speed Limit Sign	151	11670	00:06:23	00:05:47	23	40.263967	-75.274503	2	9
	35 MPH Speed Limit Sign	771	12441	00:06:39	00:06:03	33	40.262352	-75.276283	2	9
	35 MPH Speed Limit Sign	796	13237	00:06:54	00:06:18	37	40.260683	-75.278125	2	9
	35 MPH Speed Limit Sign	730	14733	00:07:29	00:06:53	27	40.259302	-75.281565	2	9
	35 MPH Speed Limit Sign	766	14003	00:07:09	00:06:33	32	40.259028	-75.279823	2	9

Units: Feet - MPH | GPS Format: Decimal Degrees | Schemes: *Presets with Google I | Define "0" Event

Buttons: Insert, Delete, Clear All

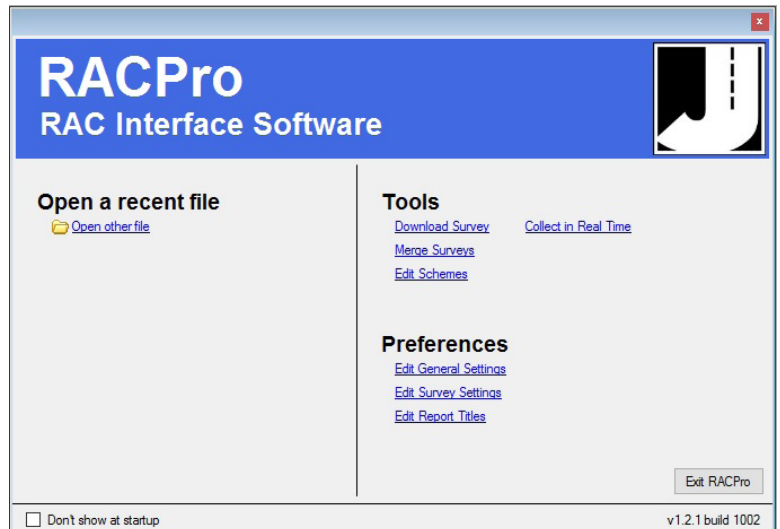
Sign/Highway Inventory & Mapping

- Download Data from the RAC Geo II
- Analyze and Edit Survey Events
- Map Events with GPS Data
- Generate Comprehensive Reports



RACPro is a powerful software program designed by JAMAR Technologies to allow you to interface with the RAC Geo II distance measuring instrument. This program can be used to retrieve stored data events from the RAC Geo II to a computer.

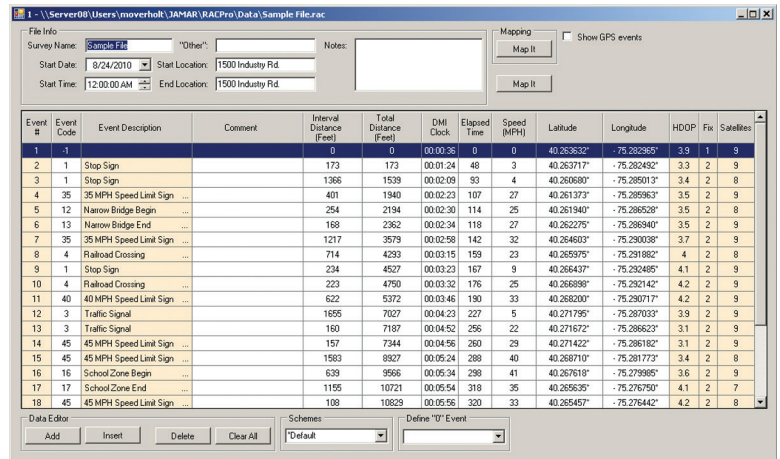
Once the data is in RACPro, it can be easily edited in a familiar spreadsheet style, and GPS Comprehensive reports can then be generated. The software comes complete with RAC USB power/download cable & User's Manual.



Edit Data in Familiar Style

The program's familiar spreadsheet-style interface makes viewing and editing data very user-friendly, even for a casual user.

Additional information can be directly added to your data file, and data can be sorted into a number of formats for analysis. You can also easily change measurement units, GPS format and more on the fly.

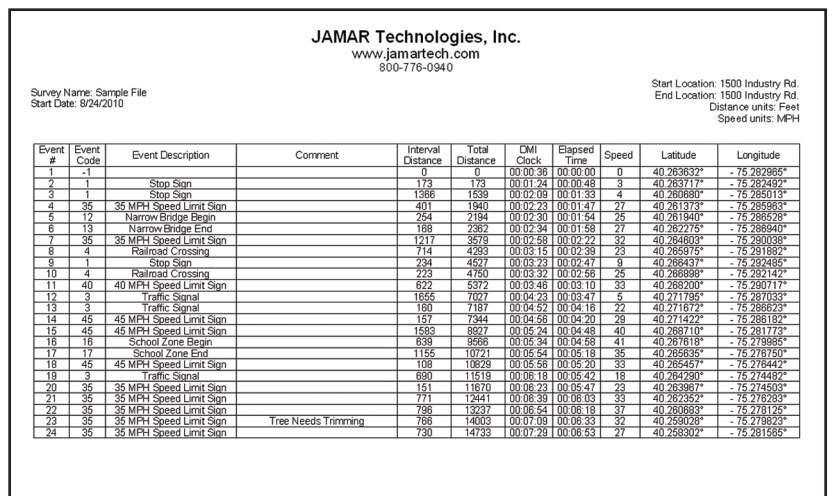


Produce Reports

A comprehensive report of your survey data can be easily created and output to either a printer or electronic PDF format.

The finished report can show event codes and descriptions, any comments you have entered, interval distance from one event to the next, total distance from the start of the survey to the event, elapsed and real time, traveling speed at the time of the event, the GPS coordinates of the event and GPS accuracy information.

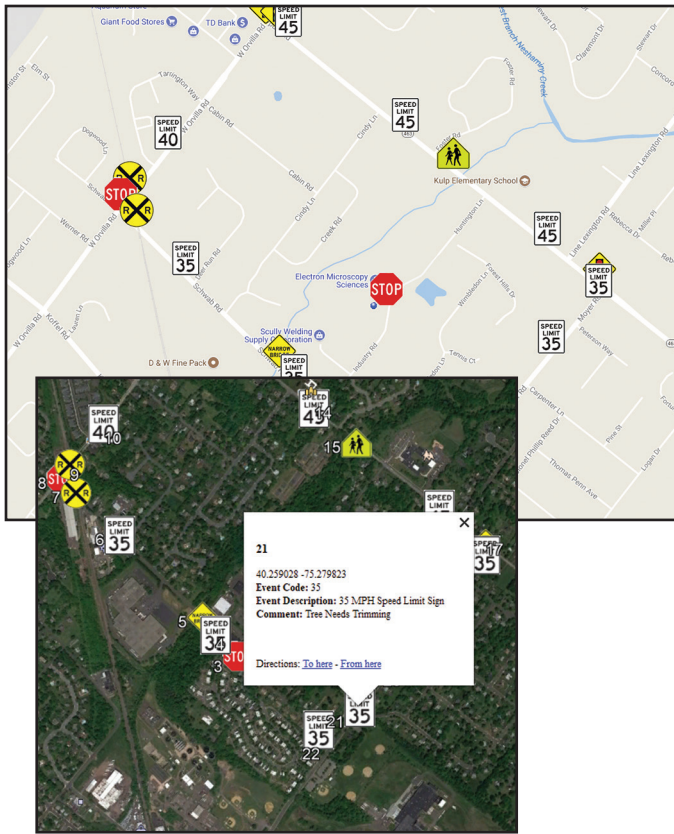
Setup options allow you to include or exclude any of these categories on the report.



Map Survey Data

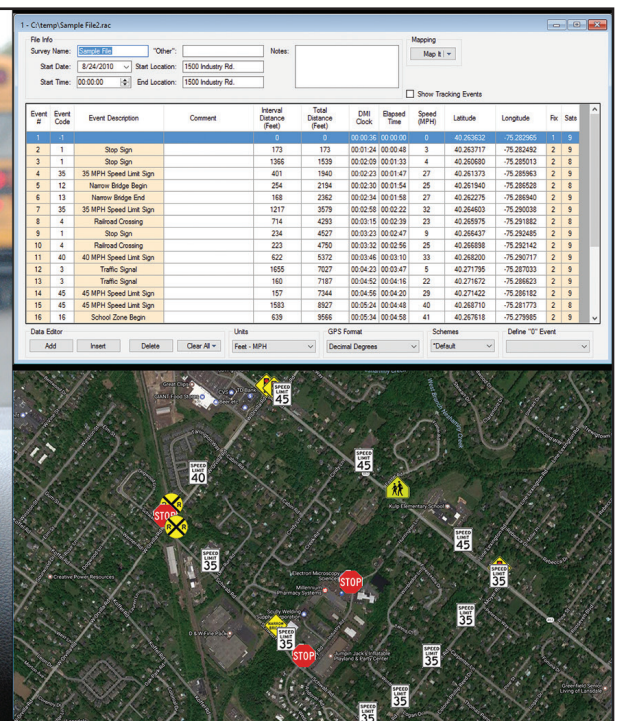
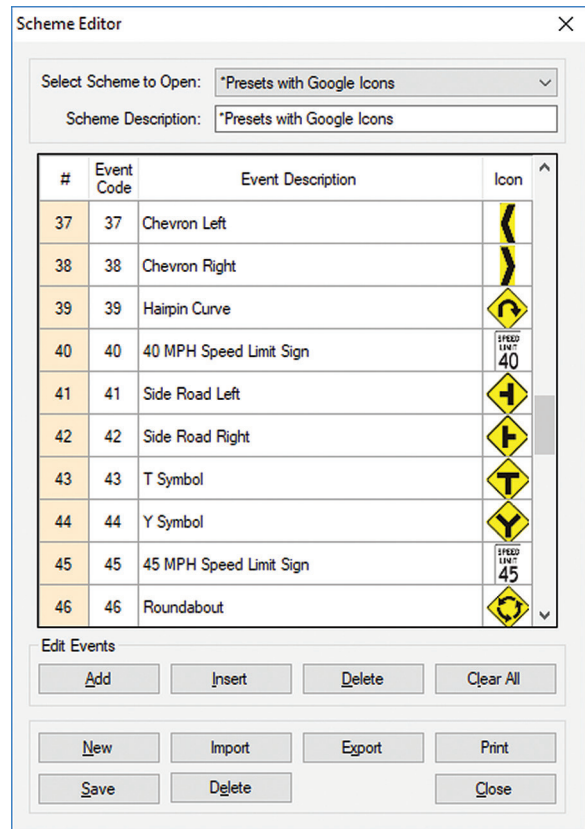
Data that has been collected with GPS coordinates can be mapped using Google Maps, allowing you to get a highly visual representation of the data you've collected.

Icons used to map the events you record can be customized to whatever graphics you desire, and text information can be shown.



Custom Schemes

With RACPro, you can use different sets of Event Descriptions for different surveys. These sets of descriptions are called Schemes. RACPro allows you to create custom schemes for any events you want to record. You can also assign icons to the events, which will then be placed on the map when you map your data. These icons can be traffic signs or any other graphic you would like.



**Dreading your
upcoming SIGN
INVENTORY?**



**The RAC Geo II
DMI makes it
EASY!**



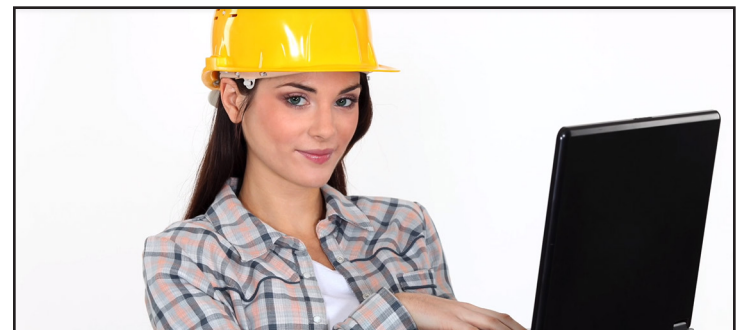
**Collect Sign Data
& GPS Coordinates
as you drive...**

Event #	Event Code	Event Description	Comment	Interval Distance (Feet)	Total Distance (Feet)	DMI Clock	Elapsed Time	Speed (MPH)	Latitude	Longitude	HDOF	Fix	Satellites
1	-1			0	0	00.0036	0	0	40.263632	-75.262965	3.9	1	9
2	1	Stop Sign		173	173	00.0124	48	3	40.263717	-75.262492	3.3	2	9
3	1	Stop Sign		1366	1366	00.0209	93	4	40.263889	-75.262013	3.4	2	9
4	25	35 MPH Speed Limit Sign		1940	1940	00.0223	107	27	40.261372	-75.262982	3.5	2	9
5	12	Narrow Bridge Begin		254	2194	00.0230	114	25	40.261940	-75.262628	3.5	2	8
6	13	Narrow Bridge End		188	2382	00.0234	118	27	40.262275	-75.262940	3.5	2	9
7	35	35 MPH Speed Limit Sign		1217	3579	00.0258	142	32	40.264603	-75.260038	3.7	2	9
8	4	Railroad Crossing		714	4283	00.0315	159	23	40.265876	-75.261882	4	2	8
9	1	Stop Sign		234	4527	00.0323	167	9	40.266437	-75.262495	4.1	2	9
10	4	Railroad Crossing		223	4750	00.0332	176	25	40.266898	-75.262142	4.2	2	9
11	40	40 MPH Speed Limit Sign		622	5372	00.0346	189	33	40.268200	-75.260717	4.2	2	9
12	3	Traffic Signal		1655	7027	00.0423	227	5	40.271796	-75.267023	3.9	2	9
13	3	Traffic Signal		160	7187	00.0432	256	22	40.271672	-75.266623	3.1	2	9
14	45	45 MPH Speed Limit Sign		157	7344	00.0456	260	29	40.271422	-75.266182	3.1	2	9
15	45	45 MPH Speed Limit Sign		1983	8927	00.0524	288	40	40.268710	-75.261773	3.4	2	8
16	16	School Zone Begin		639	9566	00.0534	298	41	40.267618	-75.273988	3.6	2	9
17	17	School Zone End		1155	10721	00.0554	318	35	40.265635	-75.276750	4.1	2	7
18	45	45 MPH Speed Limit Sign		108	10829	00.0556	320	33	40.265457	-75.278442	4.2	2	8

**One CLICK to
see your data
in Google Maps...**



**It really is that
SIMPLE!**



support@northlinecanada.com • northlinecanada.com
+1 905-985-2120
60 Vanedward Drive, Unit 7
Port Perry, ON, Canada L9L 1G3